

Manor Primary School Knowledge Organiser –KS1 Geography



Topic: This is Me!

What should I already know?

- Know that different parts of the world have different weather (yr1)
- Know that people in different countries live in different types of houses and have different ways of life.
- Name at least 5 continents and find them on a map.
- Name and locate at least 5 of the continents
- Name two countries in Europe.
- Find Antarctica on a map and globe
- Know that it is extremely cold in the Arctic
- Say two things that are the same living in England and Arctic and two things that are different. e.g. transport, shopping , weather

At the end of the unit, I will be able to:

- Name and locate our local town/village- Tamworth/Drayton Bassett
- Observe and describe the human and physical geography of Drayton Bassett
- Use basic Geographical vocabulary to refer to physical and human features of our school and its grounds and of the surrounding environment
- Use photographs to recognise landmarks and basic human and physical features
- Use simple fieldwork and observational skills to study the geography of our school and its grounds
- Understand geographical similarities and differences through studying the human and physical geography of a small area of the United Kingdom (Drayton Bassett), and of a small area in a non-European country (Village in Africa)
- Use aerial photographs to recognise landmarks and basic human and physical features:
- Devise a simple map; and use and construct basic symbols in a key.

Phase: KS1

Map of the United Kingdom



Our school is in a small village called Drayton Bassett which is in the county of Staffordshire. Our nearest town is Tamworth, and our nearest city is Lichfield

Strand: Place knowledge

We are MANOR! As Geographers we will ...

Manners

Develop a respect and understanding for the ways other cultures and nationalities live. Share ideas, celebrate good work, value others' contributions, or discussions and debates.

Aspiration

Learn by being challenged in a series of well-designed geographical enquiry tasks linked to meaningful contexts and develop a knowledge of geography based causes and careers and broaden our horizons around the world.

Nurture

To recognise that we live in a wonderful world made up of many different people with different beliefs, values, appearances, life situations and abilities. We will develop an appreciation and respect for the diverse society and environment in which we live, showing care and compassion for the environment and others around us.

Open-Mindedness

Develop our understanding of different cultures by looking at how different cultures and beliefs can impact on the environment and human issues. We will be open-minded when learning about customs and traditions allowing us to develop our humility and an understanding of the world as a global community.

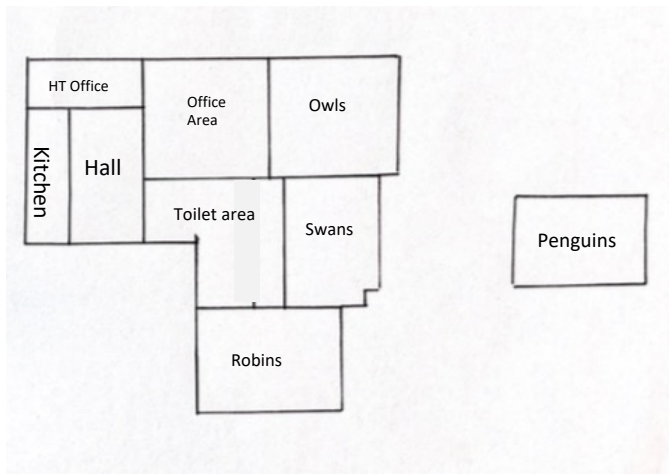
Resilience

Understand how to make connections with the world around us and challenge ourselves to be persistent and learn more through investigations which stimulate and motivate us. We will develop our geography skills with patience and care.

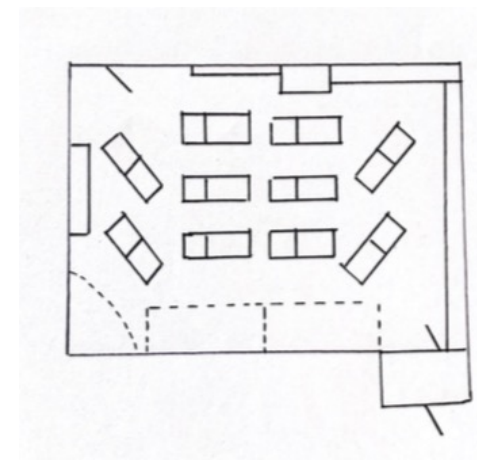
Our School – Manor Primary.



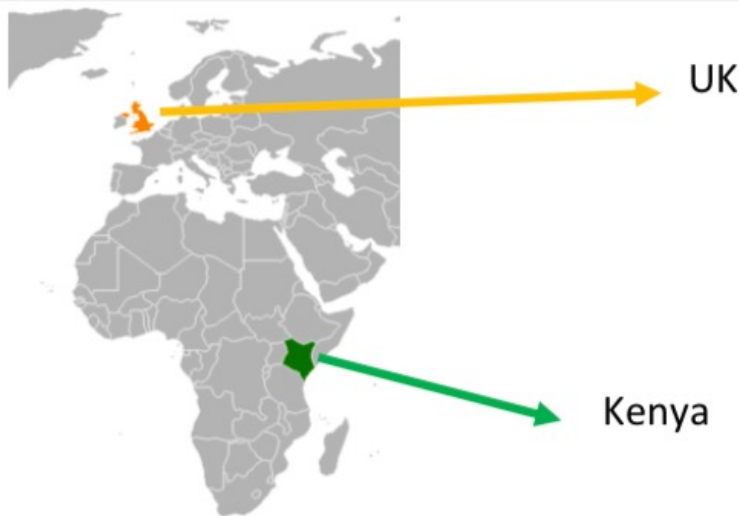
Aerial photograph of our school and grounds



School layout diagram



Swans' classroom layout



The United Kingdom (UK) is made up of four countries - England, Scotland, Wales and Northern Ireland. The UK belongs to the continent of Europe. We live in England.

Kenya is a country in the continent of Africa. Africa is the second largest continent in the world.

Geography Quiz.

Question

Answer

1)	Is our school in a village or a city?	
2)	How many main rooms does our school have?	
3)	True or false... London is our nearest city?	
4)	Is Africa a country or a continent?	
5)	How many cars can you see in our aerial photograph of the school and its grounds?	

Vocabulary

continent	a large solid area of land. The earth has seven continents. In order from largest to smallest, they are Asia, Africa, North America, South America, Antarctica, Europe, and Australia. ... Most of the continents are also divided into countries.
country	an area of land that has its own government. Countries can be big or small.
village	a small group of houses, perhaps with a few shops, that are often in the countryside. Drayton Bassett is a village.
city	a place where many people live, with many houses, stores and businesses. Lichfield is our nearest city.
temperature	how hot or cold somewhere or something is
aerial photograph	a photograph taken from the air – usually from an airplane.
landmark	something (as a building, a large tree, or a statue) that is easy to see and can help a person find the way to a place near it.
key	a map key uses symbols, colours, or lines to represent important places or landmarks on a map
human feature	a man-made landmark, building or anything that is built by humans (not something that is formed naturally)
physical feature	natural landmarks such as the sea, mountains and rivers.